



THE ART OF WEAVING

OUR**COLLECTION** | THE ART of WEAVING

ROLS



CRAFTMANSHIP NEVER GOES OUT OF STYLE...

For almost 100 years, we have been creating exceptional quality carpets from our factory in Crevillent, a small town in the province of Alicante, south eastern Spain, where carpet weaving has its cultural home within a region that is acclaimed for its rich heritage in the production of textiles. We cherish this legacy with great pride and are committed to our manufacturing operations remaining at the heart of our community, utilising the traditional carpet making techniques that have been passed down through generations of local artisans, whose skills continue to be woven into the products we make today. You can be assured that our passion and commitment is entwined within every tuft of a Rols carpet.

Our latest brochure showcases exciting new collections, including Gala, an exclusive Wilton woven carpet with a subtle stria background and Luna, an eco-friendly luxurious tip-sheared carpet that uses recycled nylon, a unique modern fibre created by recovering plastic waste, such as abandoned fishing nets, from the world's oceans and marine industries, which beautifully complement our extensive range of contemporary velour finishes in well-known collections such as Annabelle, Castor Plus and Zenit. This extensive range of luxury carpets is further enhanced by the introduction of a comprehensive selection of edge finishes, allowing our stock carpets to be made up into customised area rugs and runners.

This catalogue is a concise illustration of our wide-ranging portfolio of premium quality carpets and the value-added services available to support design professionals in all our key markets. We trust you will find it an indispensable and easy to use resource when selecting carpets and rugs.

WHAT'S INSIDE?

Stock Ranges

› Velvets:

Annabelle III	16
Castor Plus	18
Galaxy	20
Paradise	22
Queen	24
Salónica	26
Sensación	28
Teide	30
Trevi	32
Zenit +	34

› Textures:

Ariadna - Loop	36
Berber-Plus	38
Corfu-N	40
Lara - Uni	42
Luna	44
Maria	46
Martina	48
Nordica - Classic	50
Serena	52
Sisal Bucle Fino	54

› Designs:

Diana - Greek Key	56
Diana - Herringbone	58
Gala - Diamond	60
Gala - Key	62
Gala - Lattice	64
Nordica - Chevron	66

› Indoor/Outdoor:

Chill-Out	68
Koper Basics	70
Koper Metallic	71
Nature Premium Craft	72
Nature Premium Lite	74
Nature 4506	76
Nature 4507	78
Nature Deluxe 69	80
Nature Deluxe 616	82

Borders & Edges

› Total Edge Collection:

Fiesta	88
--------	----

› Border Selection:

Rustic	89
Cotton Lis	90
Panamá	91

› Other Edges:

Whipped Edge	92
Dobilux	92
Heat-Sealed	92

› Extras available:

Back Band	93
Anti-Slip Underlay	93
Black Underlay	93



PROUD HISTORY

Put simply, the heritage of ROLS is making exquisite carpets. The heart of our ethos is the bond between the skilled craftsmen and prime materials selected for every Rols carpet. Our story, along with our continuous desire for perfection, began in 1917, when our founder, Francisco Gomez, began weaving carpets from vegetable fibres using a simple hand loom. Through the stewardship passed down to subsequent generations our founding principals have remained constant. From our humble beginning, through a century of global change and technological advance, Moquetas Rols has evolved to become a market leading manufacturer of premium quality carpets.

Today, both in our domestic market and over 30 countries across the world, Rols carpets are highly valued. Our exquisite products grace the floors in some of the best known international hotels, landmark public and corporate buildings, iconic luxury goods stores and high specification private residences. You can be assured of our continued commitment to our founding core values and now, just as in 1917, every Moquetas Rols product is designed and manufactured with passion and skill in Spain.





WE ARE **ARTISANS**

Creating exquisite carpets and rugs requires every member of our team to work closely together. At Rols we employ unique people, skilled specialists in their field, highly motivated, proud of their company and the products we make. This key human resource is central to our strategy, combining the experience and in depth knowledge of colleagues with over 30 years' service to the raw energy and enthusiasm of our latest recruit, ensuring crucial expertise is retained through the generations. Crevillent is at the heart of a region with a rich textile history. We are proud of this legacy and have a continuous commitment to our manufacturing remaining in Spain and at the centre of our local community.

Furthermore, we firmly believe that our sustainability policy must be integrated with our community in as many stages of production as possible and thus give full meaning to our "Made In Spain". For this reason, our main suppliers through wool, dyeing or winding are located less than 30 km away, and in this way, we also try to keep the carbon footprint associated with transport to a minimum level.

MADE **SPAIN**



OUR SERVICES

ROLS designs and manufactures a wide range of carpets, from stylish plain qualities in a variety of pile heights and densities to intricate patterns and textural combinations. Our modern production facility incorporates state of the art equipment for producing Wilton, Raschel and Tufted specifications.

We enjoy a challenge and constant product development is a key process. Whether you require the latest in vogue style, or want to be ahead of the current curve, our creative design team is the key link in our service orientated development phase. Whether a one-off carpet for a single room to a project involving multiple designs and numerous specifications, we apply the same attention to detail in every process. Our flexible approach is dedicated to consistently meeting the desires of our customers and ensuring we deliver exquisite carpet.

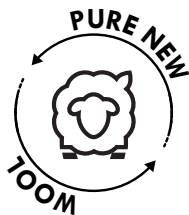
We offer two different product options:

- Stock carpet collections: featuring a wide selection of different qualities, textures, thicknesses and colours. These lines can be purchased in both full roll and cut lengths and are inventoried in Spain for prompt shipment to local and international markets.
- Custom carpets: manufactured to order in the specification, texture, design and colour to meet our customer's own unique requirements. With an experienced sales network in key international markets, our custom products can be engineered to meet specific standards in many sectors.



USING SUSTAINABLE MATERIALS

One of our main values since the beginning of Moquetas Rols has been to carry out a responsible manufacturing with our community, our people and the environment. That's why we firmly believe in having all the production centralized in Spain, in our factory located in Crevillent with looms powered by green energy. Of course, our carpets and rugs are woven with sustainable raw materials, mainly wool, which is our beloved raw material which we proudly continue to use in many of our collections. In addition, in recent years we have developed carpet collections from recycled plastics as the main component, providing a life for discarded products and contributing our bit in giving back to the planet.



WOOL

Wool is the most noble and widely used natural fibre in quality carpets and rugs and is also totally renewable. Sheep are part of a natural cycle in which they consume the organic carbon stored in plants and turn it into wool. After use, wool fibres are among the most recycled in the world and are also easily biodegradable. At Moquetas Rols we select the best national, New Zealand and Australian wools to create premium rugs and carpets for both the residential sector and projects.



RECYCLED PET

Billions of plastic bottles go into landfills every year, taking up to 700 years for just one plastic bottle to break down. With this fibre, which comes from recycled PET plastic bottles, we create carpets & rugs reproduce the visual texture of natural fibres like sisal and the feel of wool and additionally they are suitable for indoor/outdoor use, wear exceptionally well and they are very easy to clean and maintain, making them the perfect choice for commercial applications such as hotels. Just one square meter of our carpets can contain over 130 recycled plastic bottles.



RECYCLED NYLON

It is a 100% regenerated nylon which is made from old fishing nets recovered from the sea and other plastic waste. This material holds the same properties in strength and durability as normal polyamide 6 but it is fully recycled and recyclable. We have different yarn types depending on the collection, from very soft to the touch rugs that reflect light and create effects such as silk or tencel to solution dyed polyamide that resists the most abrasive cleaning products and is ideal for contract projects.





STOCK RANGES

We are delighted to introduce you to our wide-ranging stock collection, from peerless velvet pile carpets, knitted on our unique Raschel looms, to contemporary geometric patterns woven in a dense loop pile Wilton structure for the ultimate in design definition. Within our collections you will find a wide variety of products classified according to their end use, either for wall-to-wall carpet, as made-to-measure rugs or stair runners. All of our collections are available in stock for full rolls, cut length order or for a single rugs and can be efficiently shipped anywhere in the world. We believe our portfolio offers a great choice of quality carpets and we hope you enjoy selecting items for your next interior scheme.



VELVETS

Pag: 16 to 34



TEXTURES

Pag: 36 to 54



DESIGNS

Pag: 56 to 72



INDOOR/ OUTDOOR

Pag: 74 to 88



Manufacturing method: Raschel Face to Face
 Pile composition: 100% Pure New Wool
 Pile weight: ± 1.850 g/m²
 Pile height: ± 10,0 mm
 Manufacturing width: ± 4,00 m

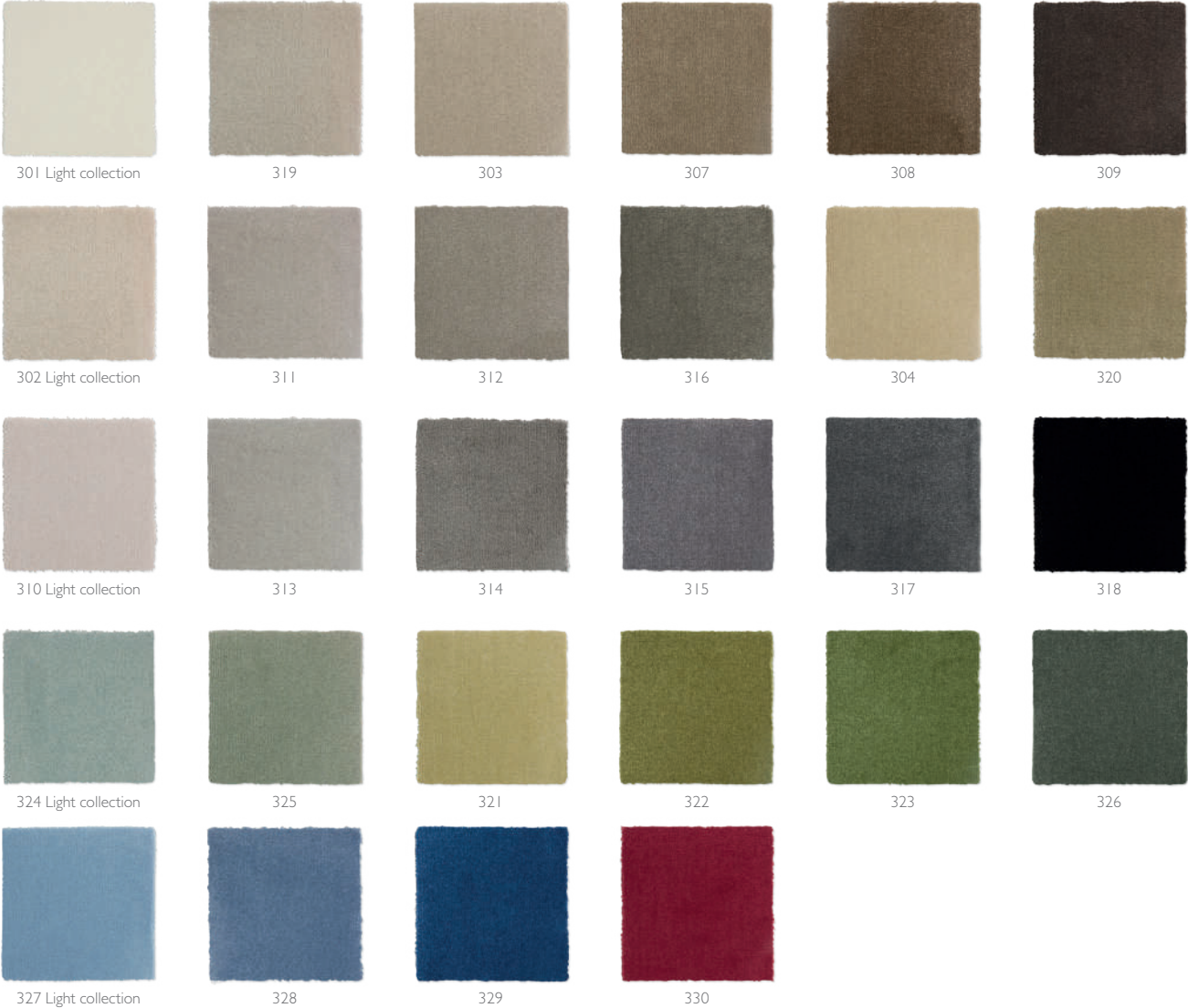


LEED®: This collection fulfills the requirements for LEED certified buildings (EQC 4.3)

TOG
1.63



ANNABELLE III 843



Manufacturing method: Raschel Face to Face
 Pile composition: 100% Pure New Wool
 Pile weight: $\pm 1.350 \text{ g/m}^2$
 Pile height: $\pm 7,2 \text{ mm}$
 Manufacturing width: $\pm 4,00 \text{ m}$

PURE NEW WOOL

23

32

MOTH PROOF

Bfl-s1

DS

TOG 1.23

LEED®: This collection fulfills the requirements for LEED certified buildings (EQC 4.3)



CASTOR PLUS 301



Ice



Foggy



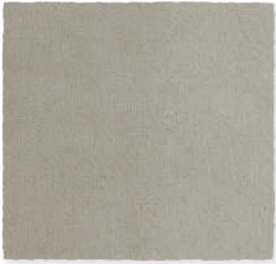
Creme



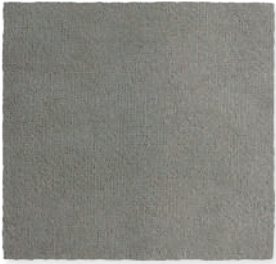
Tuffet



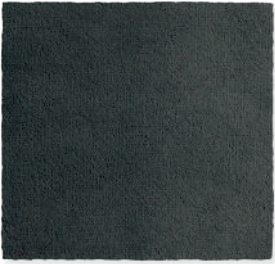
Cloud



Moon



Nickel



Iron



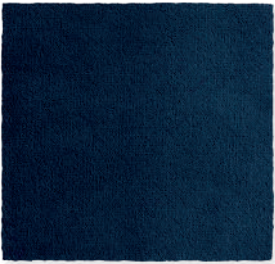
Honey



Baked



Balsam

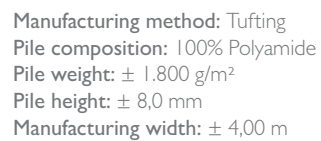


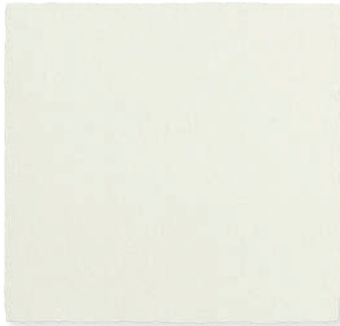
Insignia

Manufacturing method: Tufting
 Pile composition: 100% Polyamide
 Pile weight: $\pm \pm 2.150 \text{ g/m}^2$
 Pile height: $\pm 8,0 \text{ mm}$
 Manufacturing width: $\pm 4,00 \text{ m}$



GALAXY - Cloud





Blanco 305



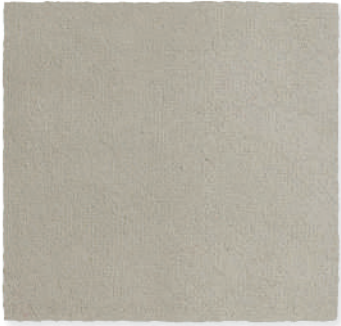
Arena 330



Beige 310



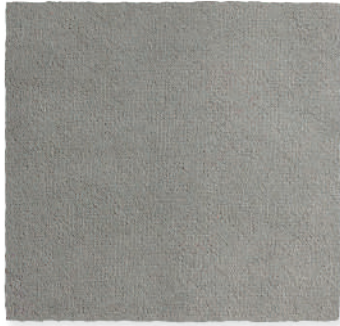
Plata 110



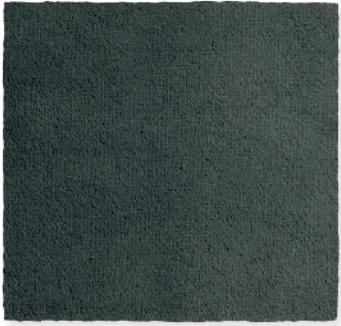
Piedra 157



Taupe 315



Gris 156



Antracita 189



Rojo 444

Manufacturing method: Tufting
Pile composition: 100% Polyamide
Pile weight: $\pm 1.350 \text{ g/m}^2$
Pile height: $\pm 10,0 \text{ mm}$
Manufacturing width: $\pm 4,00 \text{ m}$



QUEEN - Beige 310



Blanco 69



Beige 172



Beige 72



Visón 90



Gris 74



Gris oscuro 77



Negro 78



Azul 86



Rojo 25

Manufacturing method: Tufting
Pile composition: 100% Polypropylene
Pile weight: ± 1.350 g/m²
Pile height: ± 10,0 mm
Manufacturing width: ± 4,00 m



SALÓNICA - Beige 72



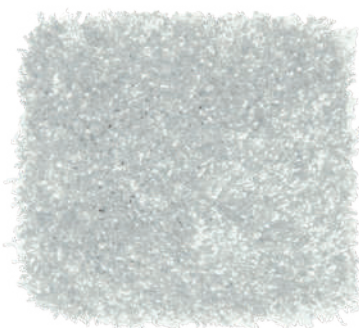
Blanco 30



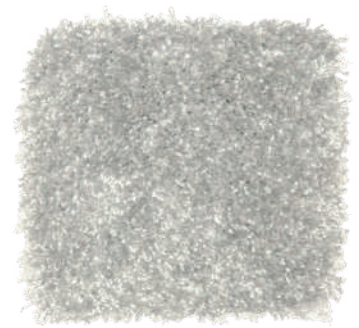
Taupe 86



Beige 33



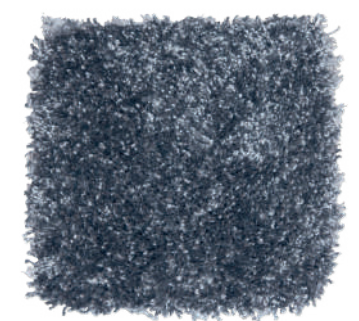
Plata 95



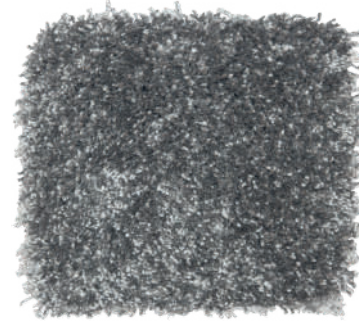
Gris claro 93



Visión 47



Metal 77



Gris oscuro 98

Manufacturing method: Tufting
Pile composition: 100% Polyamide
Pile weight: ± 2.500 g/m²
Pile height: ± 12,0 mm
Manufacturing width: ± 4,00 m



SENSACIÓN - Taupe 86



Manufacturing method: Tufting
Pile composition: 100% Pure New Wool
Pile weight: ± 1.000 g/m²
Pile height: ± 7,0 mm
Manufacturing width: ± 4,00 m

PURE NEW
WOOL

LEED®: This collection fulfills the requirements for LEED certified buildings (EQC 4.3)

TOG
1.62



TEIDE 724



Brilliant white 101



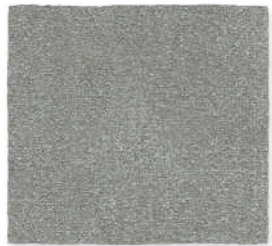
Buttercream 102



Beige 112



Portabella 115



Frost gray 314



Mink 309



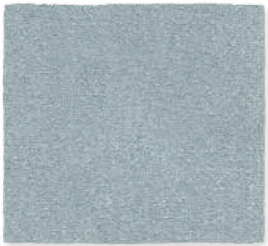
Quicksilver 302



Shale 320



Plein air 301



Eventide 300



Sailor blue 425



Moss 514

Manufacturing method: Tufting
Pile composition: 100% Polyamide
Pile weight: ± 1.450 g/m²
Pile height: ± 10,0 mm
Manufacturing width: ± 4,00 m





001 Light collection



023 Light collection



024



025



026



027



030



031



032

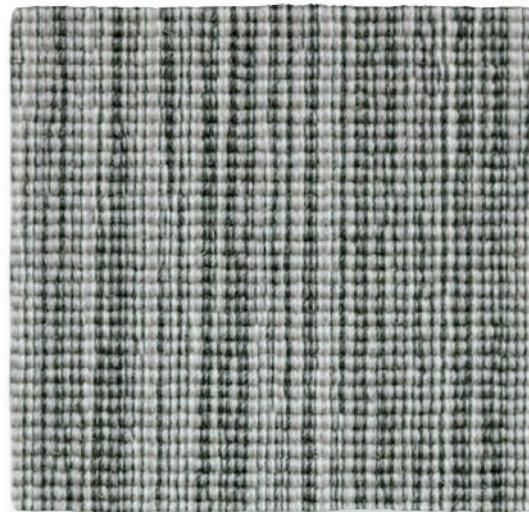
Manufacturing method: Raschel
Pile composition: 100% Pure New Wool
Pile weight: ± 2.525 g/m²
Pile height: ± 14,0 mm
Manufacturing width: ± 4,00 m



LEED®: This collection fulfills the requirements for LEED certified buildings (EQC 4.3)



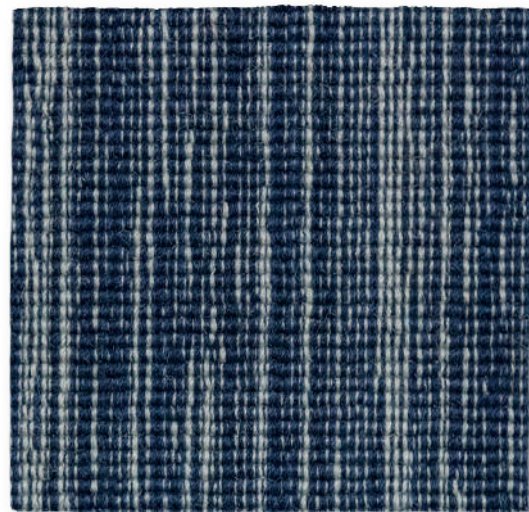
ZENIT+ 025



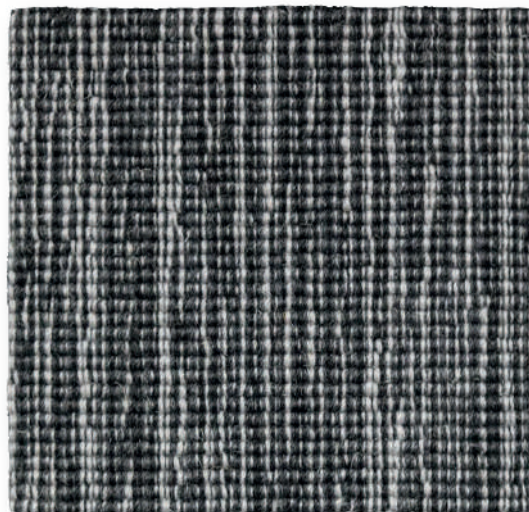
Silver



Natural



Marino



Plomo

Manufacturing method: Wilton
Pile composition: 100% Pure New Wool
Pile weight: $\pm 1.1250 \text{ g/m}^2$
Pile height: $\pm 6,0 \text{ mm}$
Manufacturing width: $\pm 4,00 \text{ m}$



LEED®: This collection fulfills the requirements for LEED certified buildings (EQC 4.3)

TOG
1.41



ARIADNA LOOP - Marino



Snow 69



Tapioca 70



Sand 90



Sesame 92



Nimbus Cloud 174



Gargoyle 75

Manufacturing method: Tufting
 Pile composition: 100% Wool
 Pile weight: ± 800 g/m²
 Pile height: ± 5,0 mm
 Manufacturing width: ± 4,00 m



BERBER PLUS - Sand 90



Jaspe 269



Jaspe 270



Jaspe 274



Jaspe 276

Manufacturing method: Tufting
 Pile composition: 100% Wool
 Pile weight: $\pm 700 \text{ g/m}^2$
 Pile height: $\pm 5,0 \text{ mm}$
 Manufacturing width: $\pm 4,00 \text{ m}$



CORFU-N - Jaspe 276



Stone



Ash



Dove



Heavy Metal



Denim



Alpine

Manufacturing method: Wilton

Pile composition: 100% Pure New Wool

Pile weight: $\pm 1.000 \text{ g/m}^2$

Pile height: $\pm 5,5 \text{ mm cut}$, $\pm 5,0 \text{ mm loop}$

Manufacturing width: $\pm 4,00 \text{ m}$



LEED®: This collection fulfills the requirements for LEED certified buildings (EQC 4.3)

TOG
1.39



LARA UNI - Stone



White rhodium



Enchanted silver



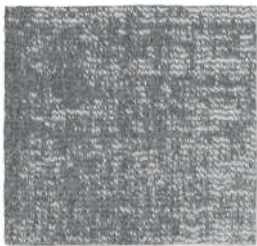
Yellow gold



Ancient copper



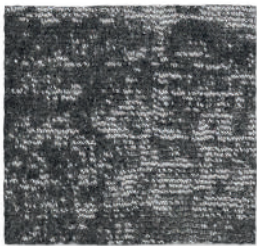
Ice palladium



Platinum



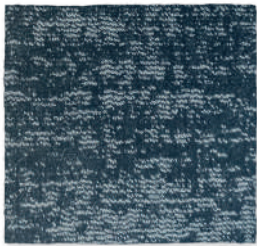
Titanium



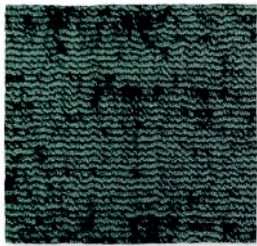
Iridium



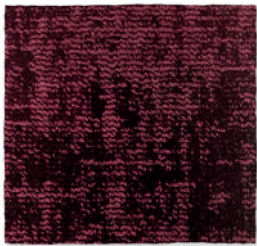
Antique bronze



Blue sapphire

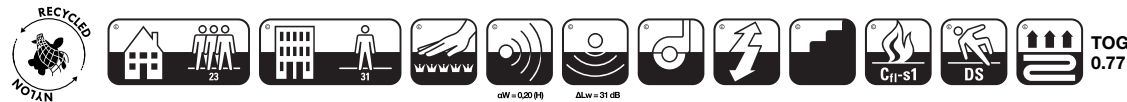


Sparkling emerald

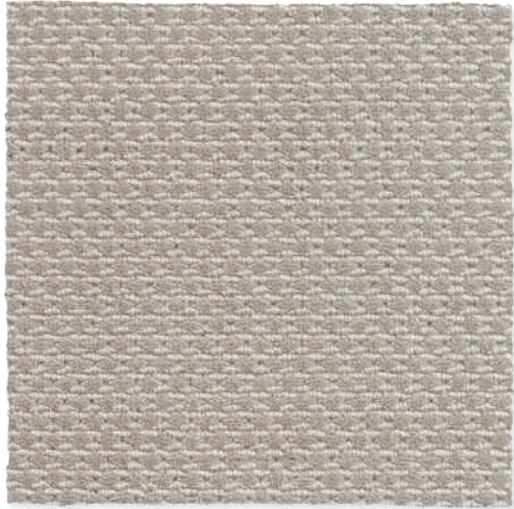


Deep ruby

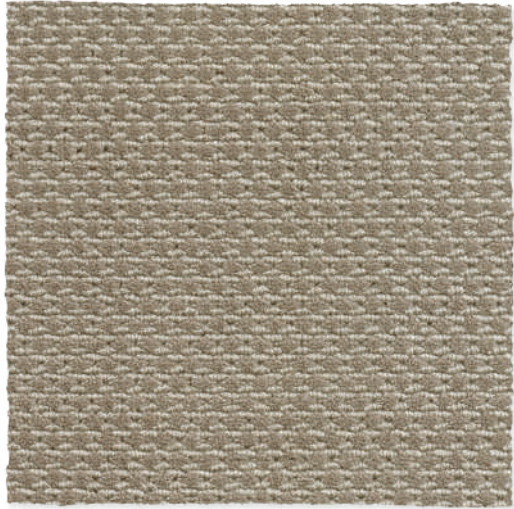
Manufacturing method: Wilton
 Pile composition: 100% Recycled Nylon
 Pile weight: $\pm 1.900 \text{ g/m}^2$
 Pile height: $\pm 9,0 \text{ mm}$
 Manufacturing width: $\pm 4,00 \text{ m}$



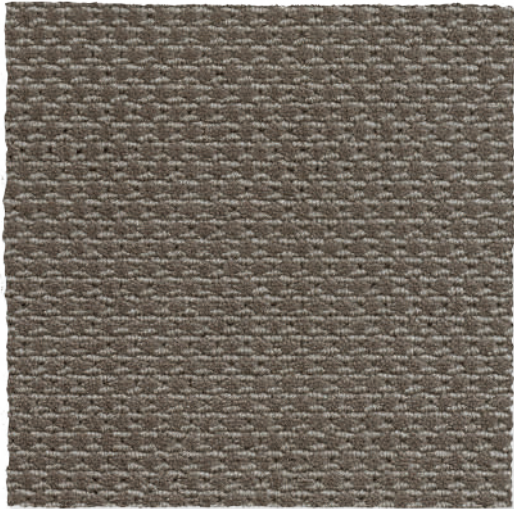
LUNA - Iridium



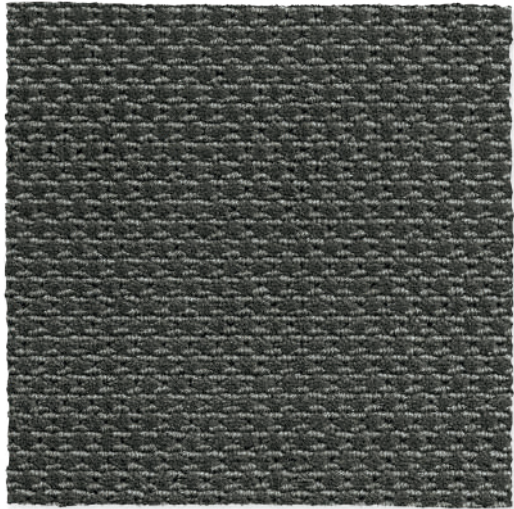
Linen



Stone



Taupe



Smoke

Manufacturing method: Wilton
 Pile composition: 100% Pure New Wool
 Pile weight: $\pm 1.580 \text{ g/m}^2$
 Pile height: $\pm 7,0 \text{ mm cut}$, $\pm 6,0 \text{ mm loop}$
 Manufacturing width: $\pm 4,00 \text{ m}$

LEED®: This collection fulfills the requirements for LEED certified buildings (EQC 4.3)



MARIA - Smoke



Galena



Pyrite



Obsidian



Moonstone



Gypsum



Columbite

Manufacturing method: Wilton
Pile composition: 100% Recycled Nylon
Pile weight: ± 1.550 g/m²
Pile height: ± 8,0 mm cut, ± 7,0 mm loop
Manufacturing width: ± 4,00 m



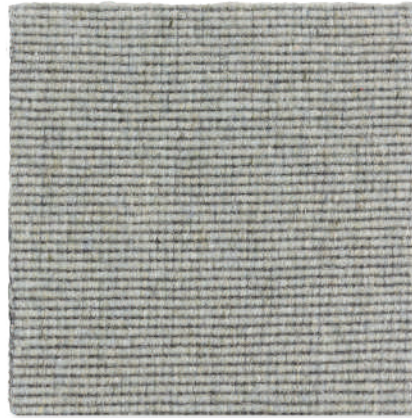
TOG
0.76



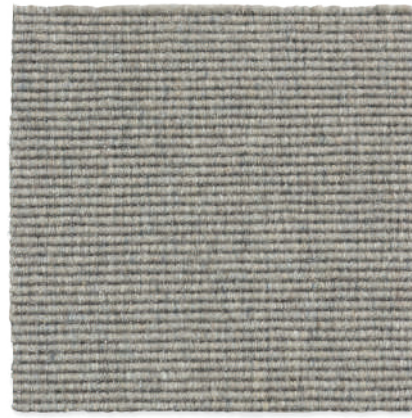
MARTINA - Moonstone



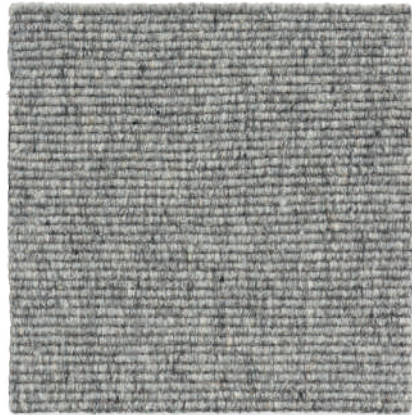
Haze



Overcast



Mist



Storm



Twilight



Midnight

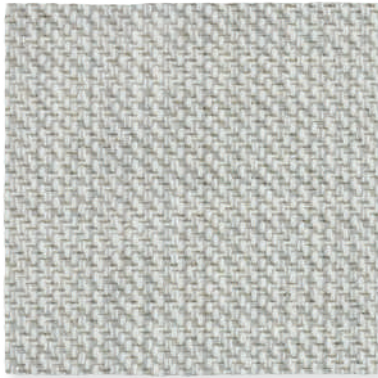
Manufacturing method: Wilton Flatwoven
 Pile composition: 100% Wool
 Pile weight: $\pm 1.060 \text{ g/m}^2$
 Total carpet thickness: $\pm 4,0 \text{ mm}$
 Manufacturing width: $\pm 4,00 \text{ m}$



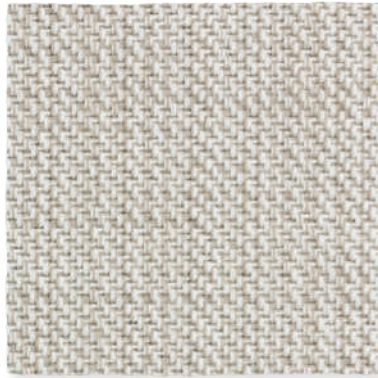
LEED®: This collection fulfills the requirements for LEED certified buildings (EQC 4.3)



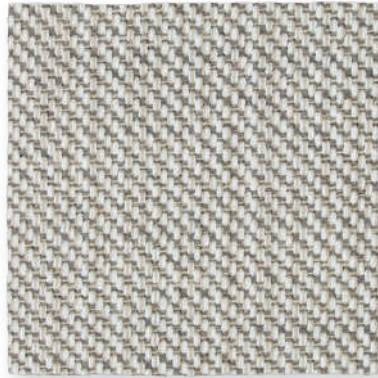
NORDICA CLASSIC - Overcast



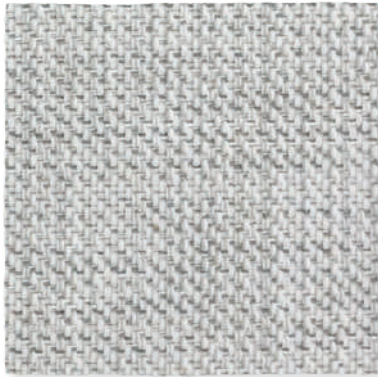
Cloud



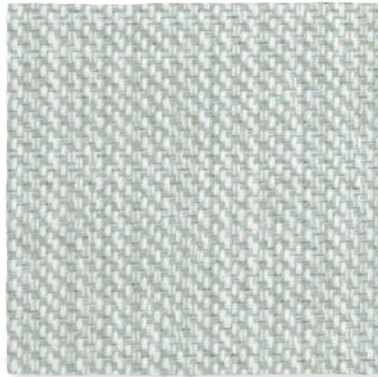
Dune



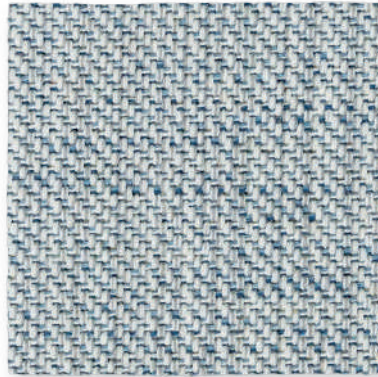
Plateau



Grotto



Meadow



Aqua

Manufacturing method: Wilton Flatwoven
Pile composition: 100% Wool
Pile weight: ± 900 g/m²
Total carpet thickness: ± 4,0 mm
Manufacturing width: ± 4,00 m



LEED®: This collection fulfills the requirements for LEED certified buildings (EQC 4.3)

TOG
0.66



SERENA - Aqua



Jaspe

Manufacturing method: Flatwoven
 Pile composition: 100% Sisal
 Total carpet weight: ± 2.000 g/m²
 Pile height: ± 7,0 mm
 Manufacturing width: ± 4,00 m



SISAL BUCLE FINO - Jaspe



Stone



Ash



Dove



Heavy Metal



Denim



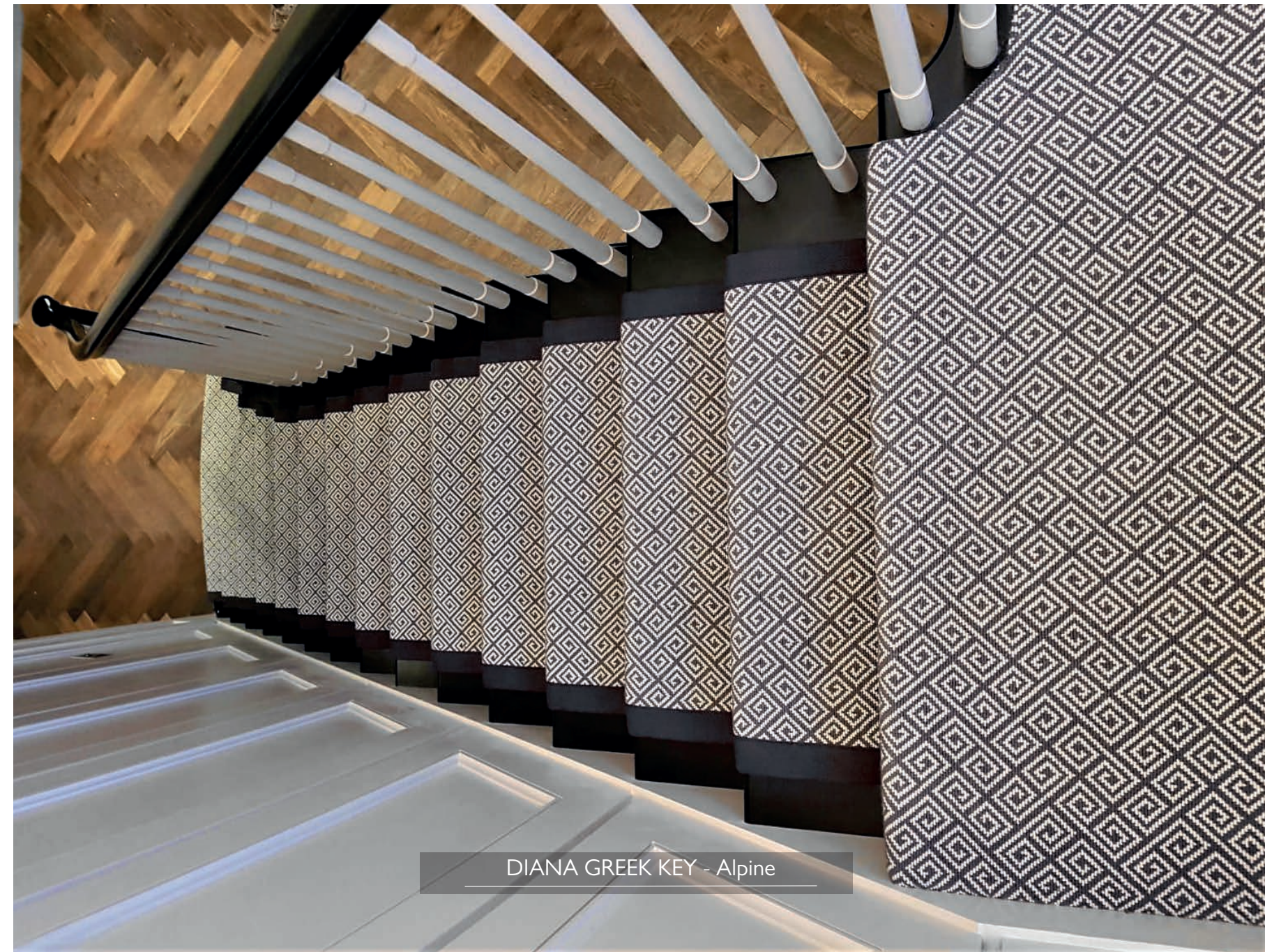
Alpine

Manufacturing method: Wilton
Pile composition: 100% Pure New Wool
Pile weight: $\pm 1.300 \text{ g/m}^2$
Pile height: $\pm 5,0 \text{ mm}$
Manufacturing width: $\pm 4,00 \text{ m}$

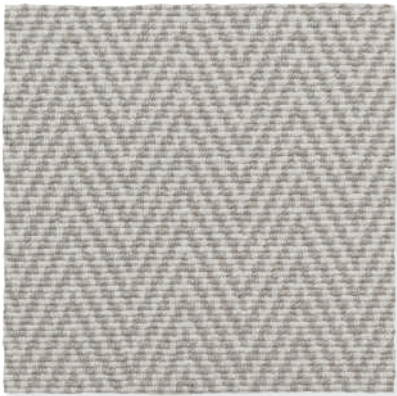


LEED®: This collection fulfills the requirements for LEED certified buildings (EQC 4.3)

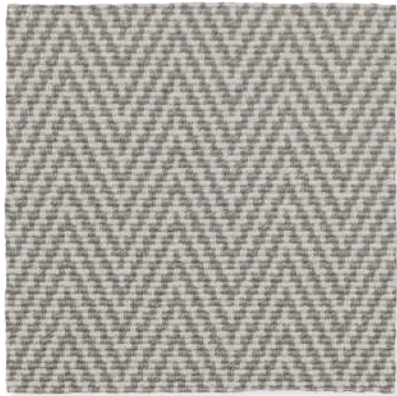
TOG
1.55



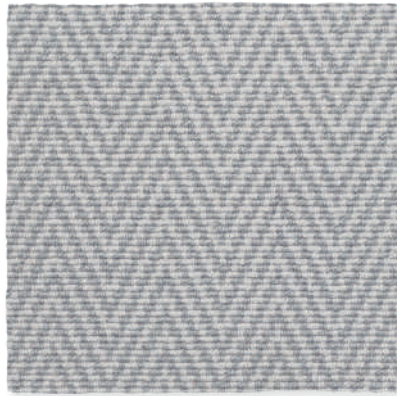
DIANA GREEK KEY - Alpine



Stone



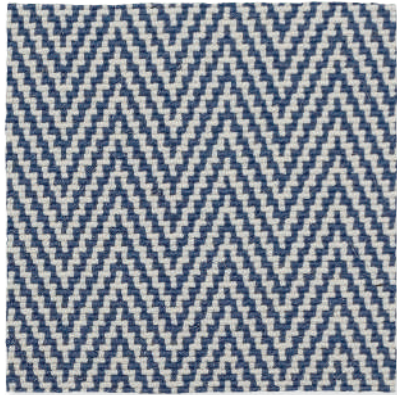
Ash



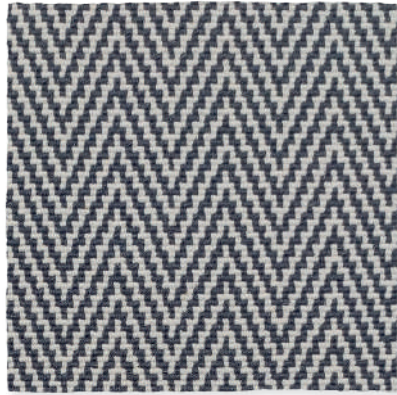
Dove



Heavy Metal



Denim



Alpine

Manufacturing method: Wilton
Pile composition: 100% Pure New Wool
Pile weight: $\pm 1.300 \text{ g/m}^2$
Pile height: $\pm 5,0 \text{ mm}$
Manufacturing width: $\pm 4,00 \text{ m}$

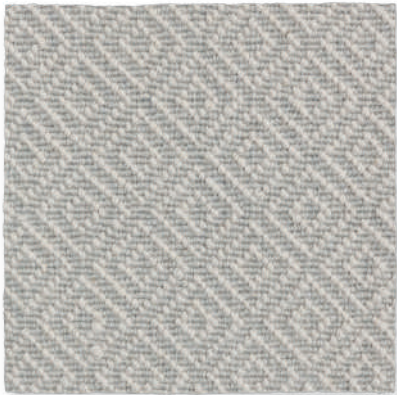


LEED®: This collection fulfills the requirements for LEED certified buildings (EQC 4.3)

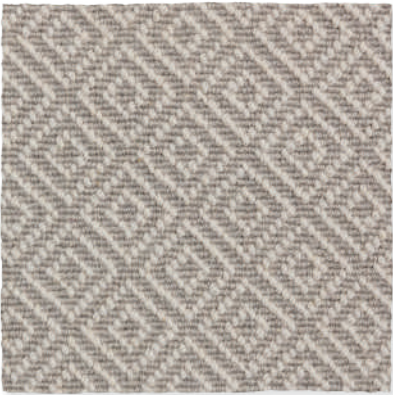
TOG
1.55



DIANA HERRINGBONE - Dove



Glacier



Pumice



Fossil



Granite



Basalt



Ocean

Manufacturing method: Wilton
Pile composition: 100% Pure New Wool
Pile weight: ± 1.300 g/m²
Pile height: ± 5,0 mm
Manufacturing width: ± 4,00 m

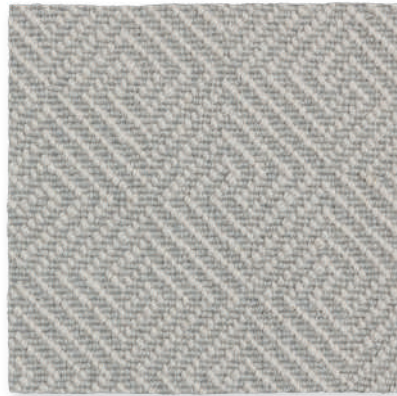
PURE NEW WOOL

LEED®: This collection fulfills the requirements for LEED certified buildings (EQC 4.3)

TOG 1.12



GALA DIAMOND - Basalt



Glacier



Pumice



Fossil



Granite



Basalt



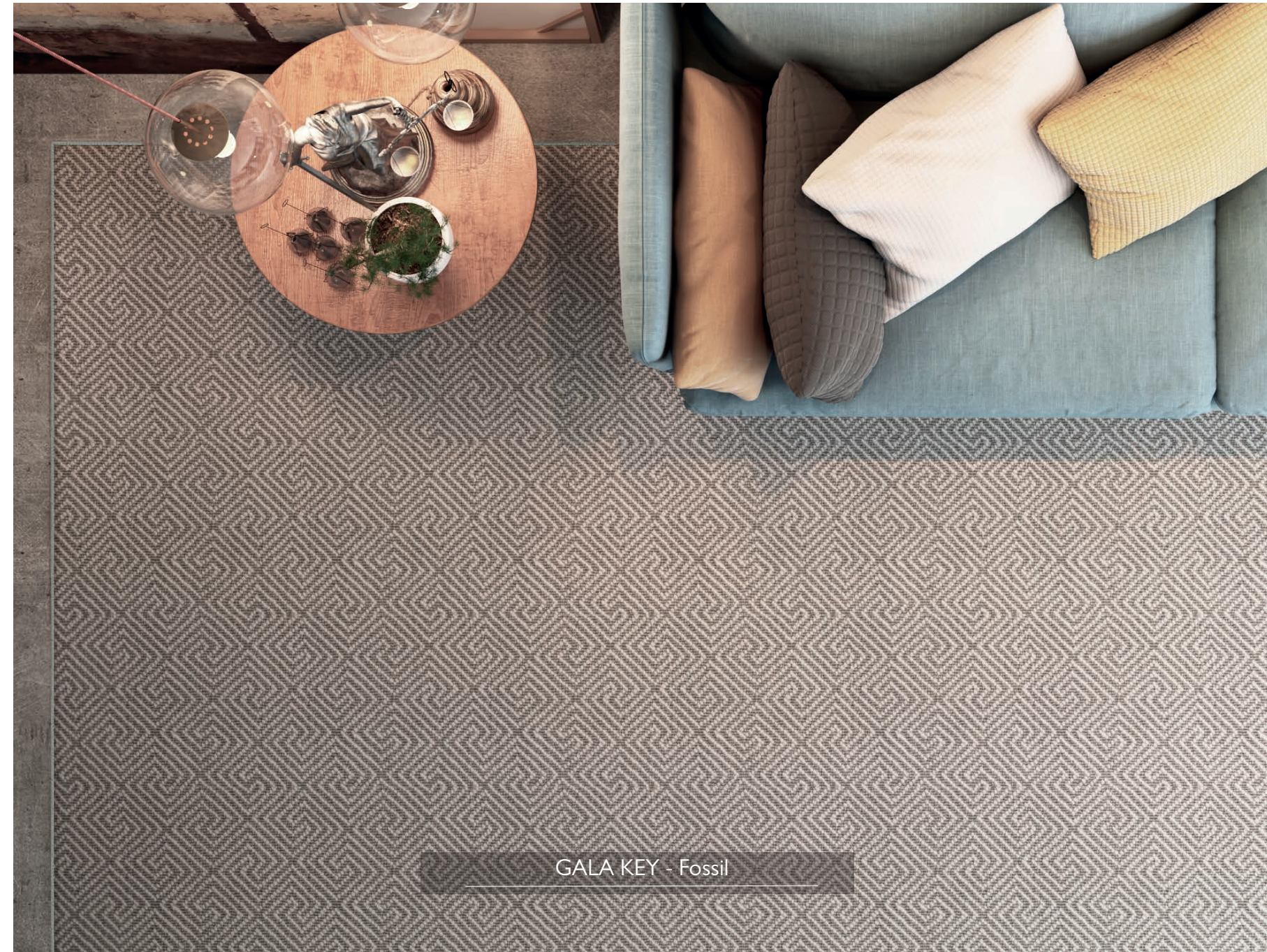
Ocean

Manufacturing method: Wilton
Pile composition: 100% Pure New Wool
Pile weight: $\pm 1.300 \text{ g/m}^2$
Pile height: $\pm 5,0 \text{ mm}$
Manufacturing width: $\pm 4,00 \text{ m}$

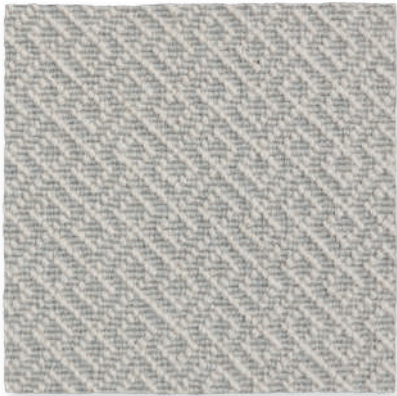


LEED®: This collection fulfills the requirements for LEED certified buildings (EQC 4.3)

TOG
1.12



GALA KEY - Fossil



Glacier



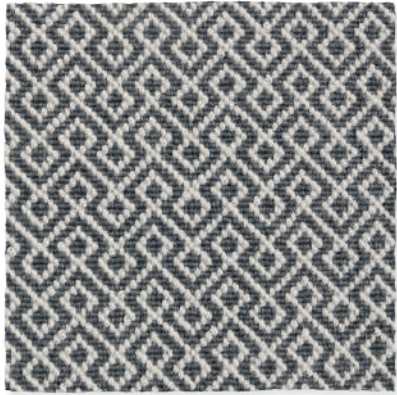
Pumice



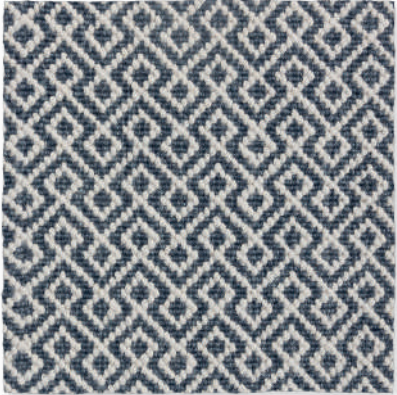
Fossil



Granite



Basalt



Ocean

Manufacturing method: Wilton
Pile composition: 100% Pure New Wool
Pile weight: ± 1.300 g/m²
Pile height: ± 5,0 mm
Manufacturing width: ± 4,00 m

PURE NEW WOOL

23

33

LEED®: This collection fulfills the requirements for LEED certified buildings (EQC 4.3)

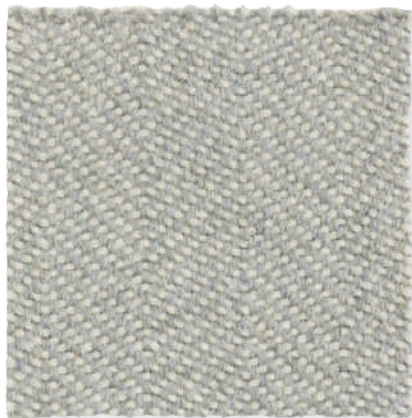
TOG 1.12



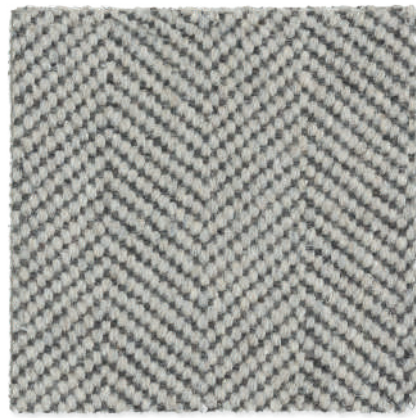
GALA LATTICE - Basalt



Haze



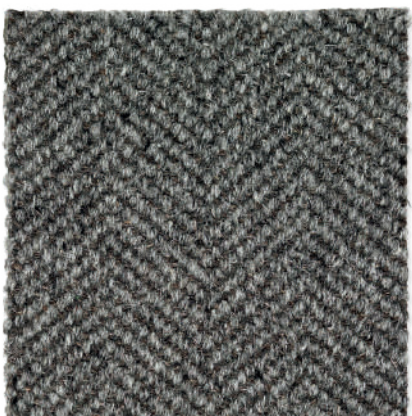
Overcast



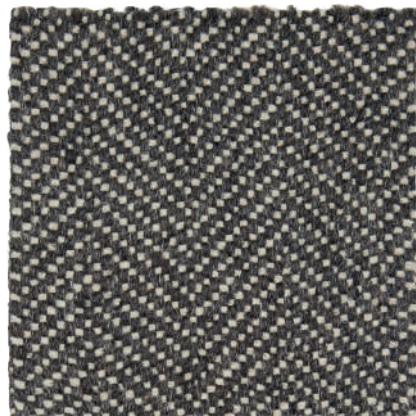
Mist



Storm



Twilight



Midnight

Manufacturing method: Wilton Flatwoven
 Pile composition: 100% Wool
 Pile weight: $\pm 1.200 \text{ g/m}^2$
 Total carpet thickness: $\pm 4,0 \text{ mm}$
 Manufacturing width: $\pm 4,00 \text{ m}$



LEED®: This collection fulfills the requirements for LEED certified buildings (EQC 4.3)

TOG
1.31



NORDICA CHEVRON - Mist



Wheat



Warm sand



Griffin



Lunar rock



Glacial blue



Midnight

Manufacturing method: Hand-Woven
 Pile composition: 100% Outdoor Polypropylene
 Total carpet weight: ± 2.400 g/m²
 Total carpet thickness: ± 10,0 mm
 Manufacturing width: ± 4,00 m



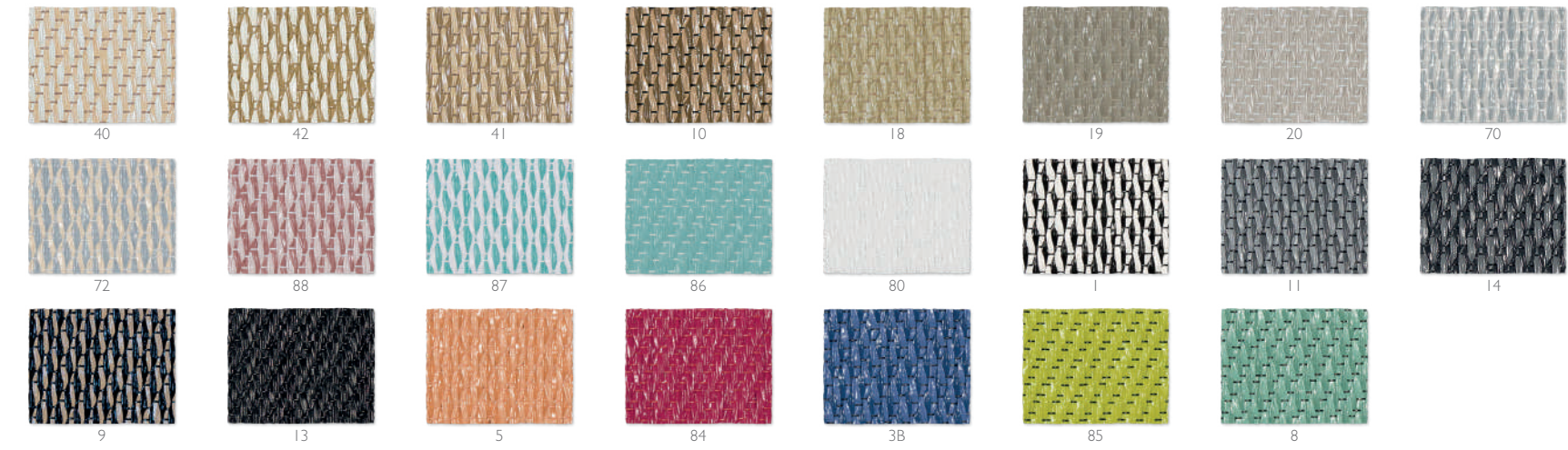
CHILL OUT - Griffin



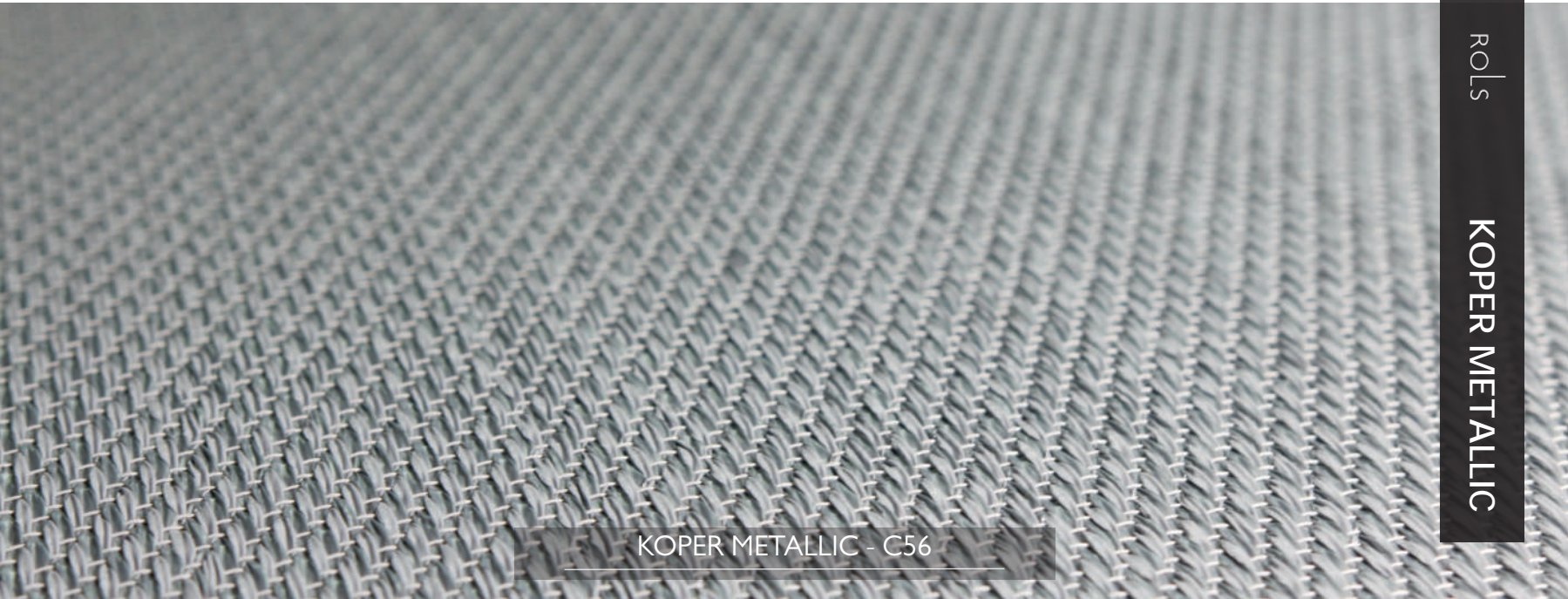
KOPER BASICS

ROLS

KOPER BASICS - 87 y 86



Manufacturing method: Flatwoven
Composition: 97% Vinyl, 3% Polyester
Total carpet weight: $\pm 3.000 \text{ g/m}^2$
Total carpet thickness: $\pm 3,0 \text{ mm}$
Manufacturing width: $\pm 2,00 \text{ m}$



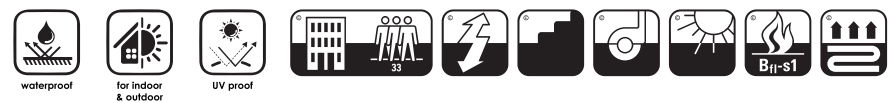
KOPER METALLIC

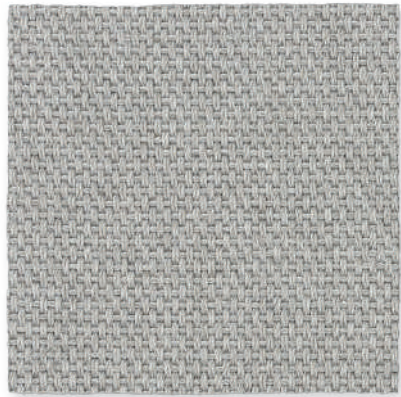
ROLS

KOPER METALLIC - C56

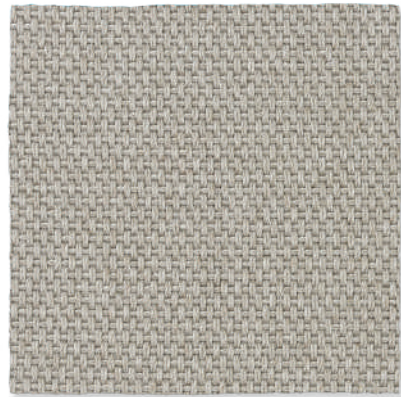


Manufacturing method: Flatwoven
Composition: 97% Vinyl, 3% Polyester
Total carpet weight: $\pm 3.000 \text{ g/m}^2$
Total carpet thickness: $\pm 3,0 \text{ mm}$
Manufacturing width: $\pm 2,00 \text{ m}$

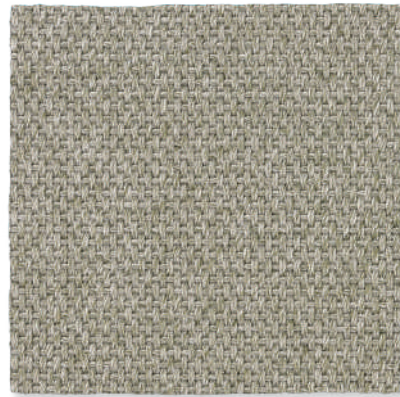




Linen



Oat



Wheat



Coconut



Walnut



Licorice

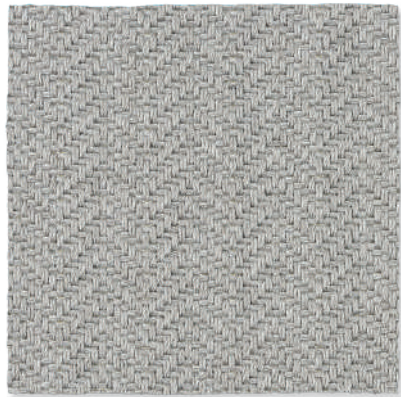
Manufacturing method: Wilton Flatwoven
 Pile composition: 100% Outdoor Recycled PET
 Pile weight: $\pm 1.500 \text{ g/m}^2$
 Total carpet thickness: $\pm 4,0 \text{ mm}$
 Manufacturing width: $\pm 4,00 \text{ m}$



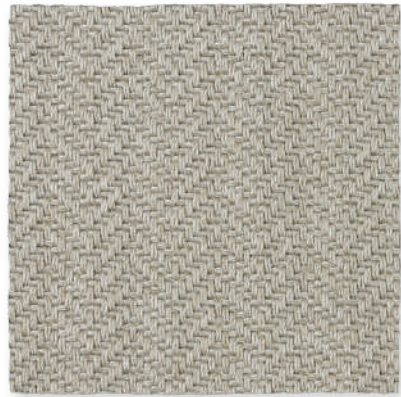
TOG
0.71



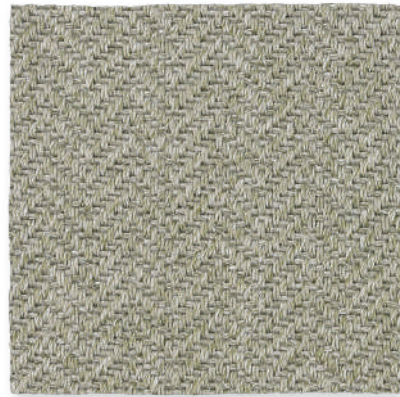
NATURE PREMIUM LITE - Oat



Linen



Oat



Wheat



Coconut



Walnut

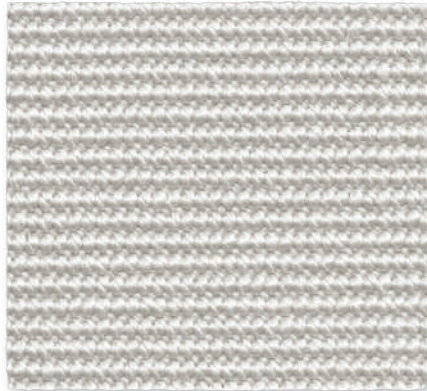


Licorice

Manufacturing method: Wilton Flatwoven
 Pile composition: 100% Outdoor Recycled PET
 Pile weight: $\pm 1.500 \text{ g/m}^2$
 Total carpet thickness: $\pm 4,0 \text{ mm}$
 Manufacturing width: $\pm 4,00 \text{ m}$



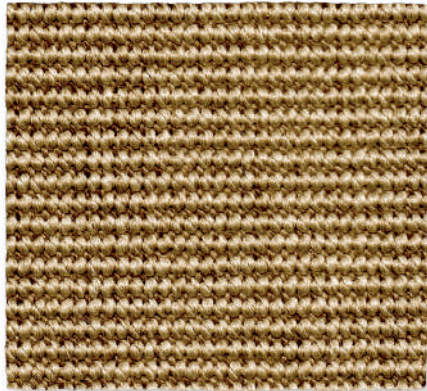
NATURE PREMIUM CRAFT - Wheat



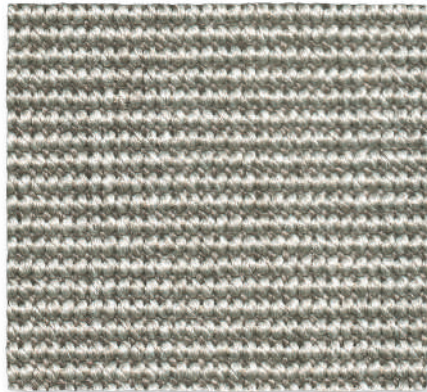
Blanco



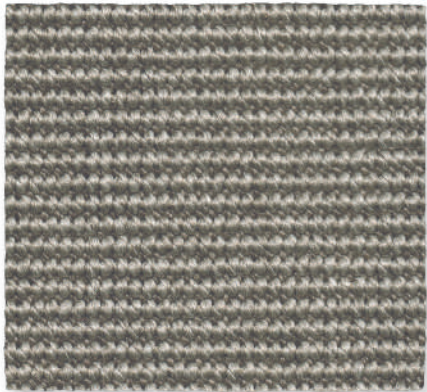
Beige



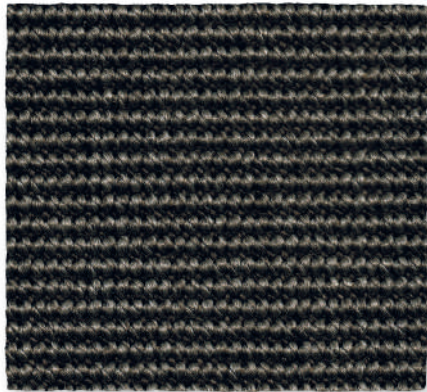
Caoba



Gris



Piedra



Negro

Manufacturing method: Flatwoven
Pile composition: 100% Outdoor Polypropylene
Pile weight: ± 1.100 g/m²
Total carpet thickness: ± 5,0 mm
Manufacturing width: ± 4,00 m



waterproof



for indoor
& outdoor



UV proof



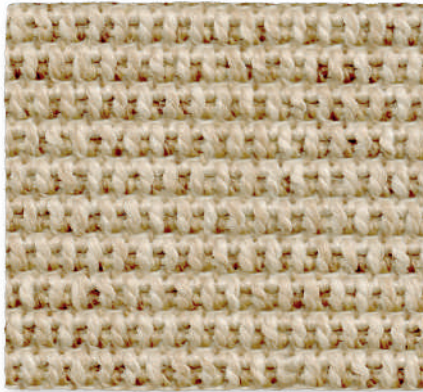
23



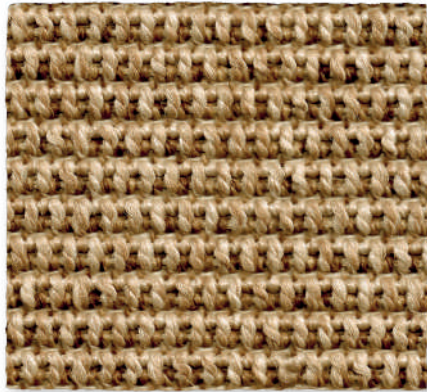
NATURE 4506 - Caoba



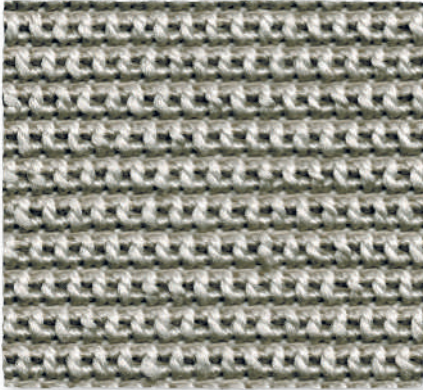
Blanco



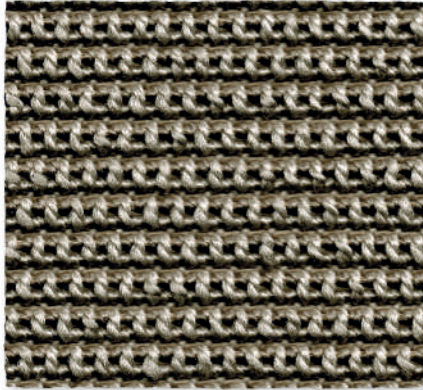
Beige



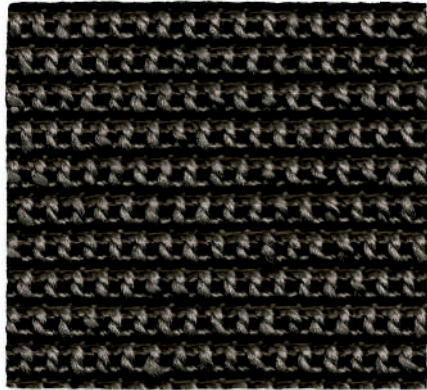
Caoba



Gris



Piedra

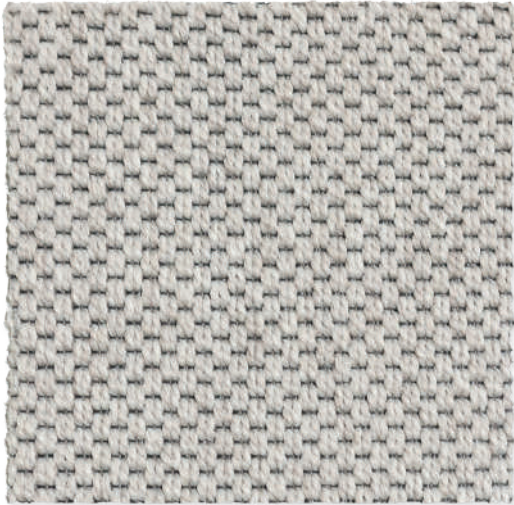


Negro

Manufacturing method: Flatwoven
 Pile composition: 100% Outdoor Polypropylene
 Pile weight: ± 1.100 g/m²
 Total carpet thickness: ± 5,0 mm
 Manufacturing width: ± 4,00 m



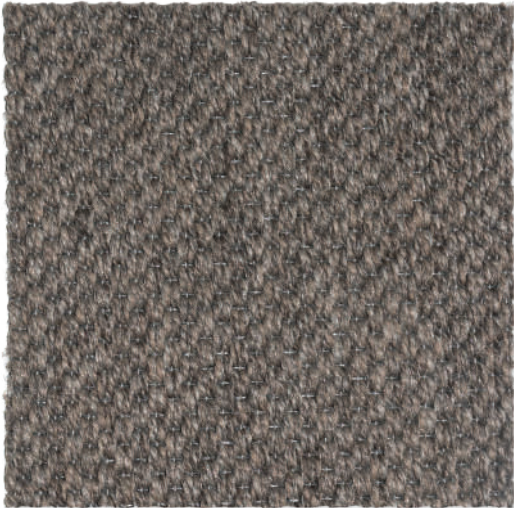
NATURE 4507 - Gris



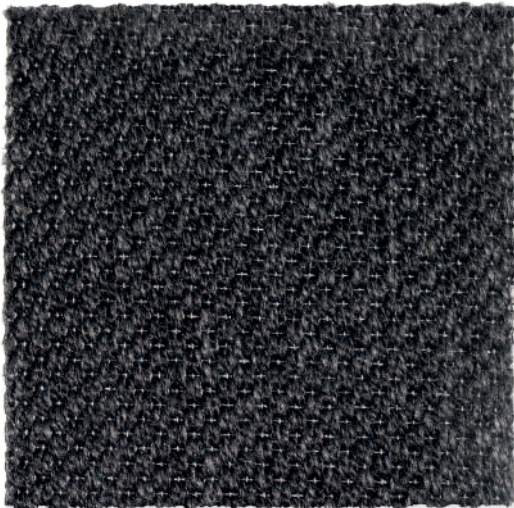
Plata 22



Tostado 16



Marrón 31



Negro 40

Manufacturing method: Flatwoven
 Pile composition: 100% Outdoor Polypropylene
 Total carpet weight: $\pm 1.655 \text{ g/m}^2$
 Total carpet thickness: $\pm 5,1 \text{ mm}$
 Manufacturing width: $\pm 4,00 \text{ m}$





Plata 22



Tostado 16



Marrón 31



Negro 40

Manufacturing method: Flatwoven
 Pile composition: 100% Outdoor Polypropylene
 Total carpet weight: ± 1.600 g/m²
 Total carpet thickness: ± 3,4 mm
 Manufacturing width: ± 4,00 m

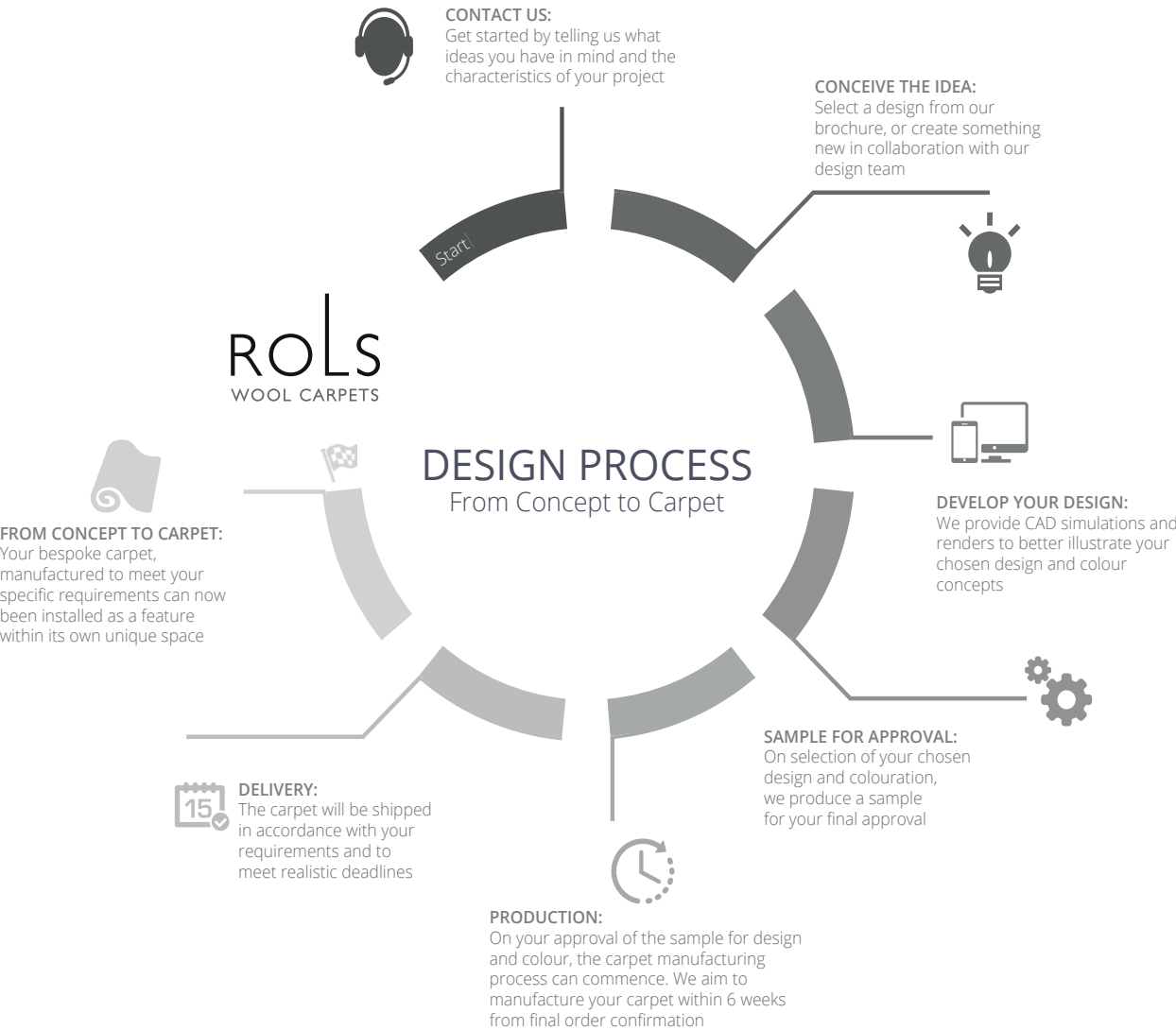


NATURE DELUXE 616 - Tostado 16

CUSTOM PROJECTS: From concept to carpet

WE OFFER A COMPLETE VALUE ADDED PROPOSAL FOR YOUR PROJECT

- High versatility of products
Three different in house production techniques offering extensive design capability, variation in structure and texture and a flexibility that allows for a low minimum order custom programme.
- Unlimited Colour Palette, to create the right carpet specific to your interior scheme. Whether selecting from our standard 138 colour range or asking us to match exact shades, the choice is yours.
- Project Specific Solutions
provides the specification suitable for your application and allows us to offer product enhancements to meet the demands of an individual project or required international standards.
- Reactive manufacturing, with a well-established supply chain and efficient modern factory, we are often able to supply bespoke carpet within 6 weeks of order confirmation.
- Low Minimum Order, in certain widths and constructions, bespoke orders can be placed for as little as 25 m².



FULL CUSTOM PROGRAMME

UNIQUE CUSTOMERS, UNIQUE CREATIONS

Our flexible manufacturing systems position Rols as a market leading specialist in a variety of sectors where customized product is an essential requirement. Inspired design, whether minimal or intricate, individualized colour combinations and a choice of premium fibres, surface textures and product structures, all synchronized to create unique carpets. Our creative design team and experienced technical specialists work closely with clients to create exceptional carpets that are personal to the space in which they are installed.

SOME PROJECT REFERENCES

UK & IRELAND

BERKELEY HOMES, IMPERIAL WHARF - LONDON
BALMAIN - LONDON
HOTEL ATHENAEUM - LONDON
HOTEL AVIATOR - LONDON
HOTEL DORCHESTER - LONDON
HOTEL BROWNS - LONDON
HOTEL FOUR SEASONS - LONDON
BLOOMBERG HEADQUARTERS - LONDON
HOTEL ONE ALDWYCH - LONDON
BERKELEY HOMES, ONE TOWER BRIDGE - LONDON
GRAFF DIAMONDS - LONDON
HOTEL BALMORAL - EDINBURGH
ROYAL BANK OF SCOTLAND - EDINBURGH
GLENELG HOTEL - AUCHTERARDER
HOTEL GLENELG - PERTHSHIRE
HILTON HOTEL - LIMERICK
THE GIBSON HOTEL - DUBLIN
FITZWILLIAM HOTEL - DUBLIN

SPAIN

HOTEL WELLINGTON - MADRID
HOTEL GRAN ATLANTA - MADRID
HOTEL HUSA PRINCESA - MADRID
CAPILLA REAL - MADRID
HOTEL ELBA - MADRID
HYATT CENTRIC - MADRID
HAMPTON BY HILTON - ALCOBENDAS
MARINA BARCELONA H-10 - BARCELONA
HOTEL PALACE - BARCELONA
SHERATON HOTEL - NOW MELIA - BILBAO
GRAND HOTEL SARDINERO - SANTANDER
SENATOR PARQUE CENTRAL HOTEL - VALENCIA
HOTEL PRINCIPE FELIPE - LA MANGA
HOTEL EL FUERTE MIRAMAR - MARBELLA
HOTEL HILTON GARDEN INN - SEVILLA
HOTEL BARCELÓ HAMILTON - MENORCA
CREATIV HOTEL BUENAVENTURA - LAS PALMAS
GRAN HOTEL BAHÍA DEL DUQUE - ADEJE
HOTEL ATLÁNTIDA - TENERIFE

FRANCE

EURO DISNEY - PARIS
HOLIDAY INN - PARIS - STRASBOURG
LINDT HEADQUARTERS - PARIS
HOTEL CRILLON - PARIS
CROWNE PLAZA - TOULOUSE
HOTEL LA PYRAMIDE - VIENNE

OTHER LOCATIONS

HOTEL SAVOY - FLORENCE
HOTEL MELIA MILANO - MILANO
HOTEL SHERATON - MILANO
HOTEL DE LA VILLE - ROME
HOTEL RAMADA - BRUXELLES
HOTEL DU ROME - BERLIN
HOTEL PRESIDENT - PRAGUE
CRUISE SHIPS STRINZIS LINE - ATHENS
HOTEL BELLAGIO - LAS VEGAS
WALL CENTER HOTEL - VANCOUVER
HOTEL MELIA HABANA LIBRE - LA HABANA
HOTEL HILTON - TOKYO
PARLIAMENT OF SAUDI ARABIA - MANAMA
HOTEL DUSIT DUBAI - DUBAI
FOUR SEASONS - BAGDAD
ROYAL PALACE - RIAD
HOTEL HILTON GARDEN INN - TANJER

MAKE UP SERVICE: BESPOKE AREA RUGS & RUNNERS

If you love our stock collections but want the option to tailor one of our carpets into an area rug or runner, then our extensive bespoke make-up service offers a great choice of edge finishes and the total flexibility to specify the precise measurements you require.

We have carefully selected a beautiful range of quality edging tapes that complement our carpets and the combination of these finishes allows us to offer stylish made-to-measure rugs or runners as a perfect accompaniment to your interior scheme.

All our area rugs can be supplied with an integral anti-slip underlay backing. Underlay not only holds the rug more securely in the desired location, but also enhances underfoot comfort, prolongs wear and provides additional sound and heat insulating properties.

Whatever combination you select, you can be sure that your made-to-measure area rug or runner will be produced using the finest quality raw materials and subjected to the same rigorous attention to individual detail that is the hallmark of all Rols products.

CREATE MY RUG PROCESS



Step 1. Select your carpet

Step 2. Select your border fabric

Step 3. Select your border style & dimension

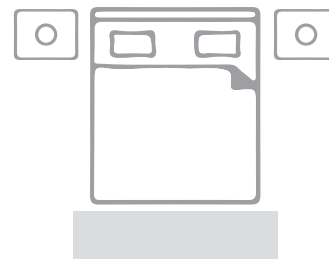
Step 4. Choose your rug dimensions

CHOOSING THE RIGHT DIMENSIONS FOR **YOUR RUG OR RUNNER**

After selecting your carpet, border fabric, edge finish layout and consider the visible width of border you require (if applicable), it is time to consider the exact dimensions of your made-to-measure rug to ensure it fits proportionately within the area of installation. The final decision is yours, but by way of guidance, you may wish to consider the following layout concepts.

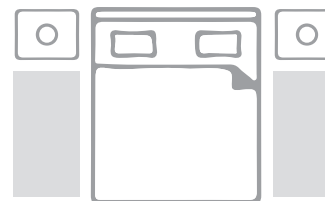
BEDROOM

Concept A



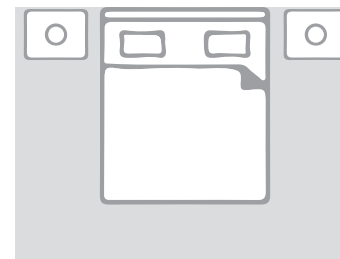
Allow the same width, or marginally wider than the width of the bed. Allow a minimum depth to the rug of around 50 to 80 cms, depending on the available space at the foot of the bed. Remember a smaller rug may be better suited to a narrower visible border on the face of the carpet.

Concept B



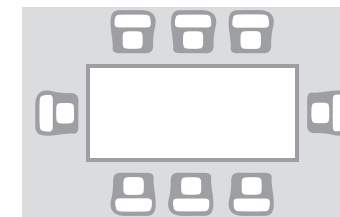
Consider the width of any bedside furniture when planning the layout. Align on the end of the bed or within the length of the bed. Allow a minimum width of 50 cms depending on the available space to the side of the bed. Remember a smaller rug may be better suited to a narrower visible border on the face of the carpet.

Concept C



Suitable for larger bedroom spaces. We recommend the rug extends out to the edge of any bedside furniture and balances to a similar dimension at the foot of the bed. These larger rugs are more suited to a wider visible border width. Remember to check the clearances of doors that open over the rug.

DINING ROOM



Allow a minimum of 75 cms beyond each side of the table, so that chairs are always positioned on the carpet when seated around the table.

LIVING ROOM

Concept A



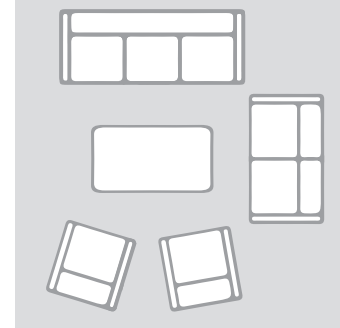
Align within the furniture layout or position in the room with permanent fixtures such as fireplaces in mind.

Concept B



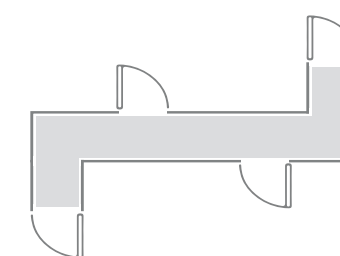
Where a larger rug is required, allow the front legs of the furniture to be positioned approximately 15 to 20 cms onto the rug. The weight of the furniture will hold the rug in place.

Concept C

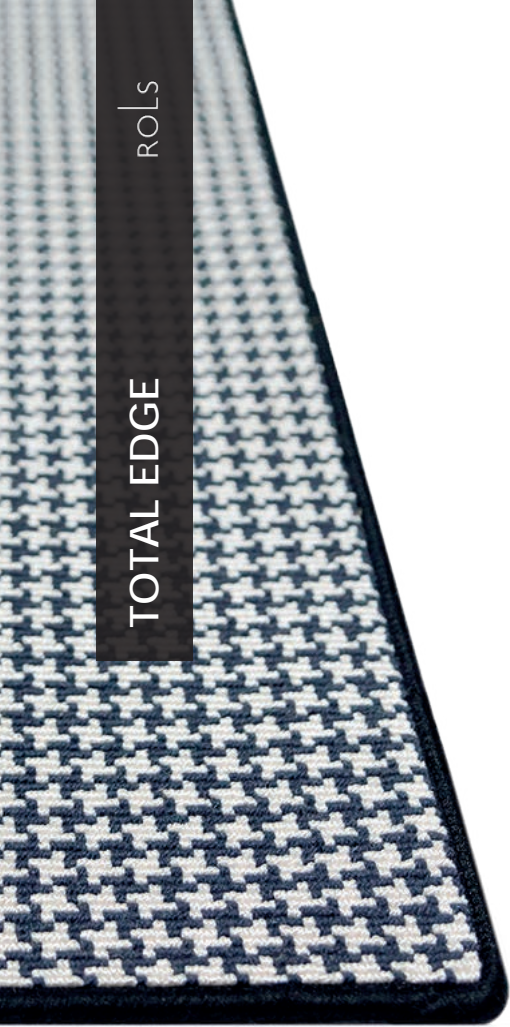


Allow for the rug to be positioned by a minimum of 15 cms off all perimeter walls or fixtures. Remember to check the clearances on doors that open over the rug.

CORRIDOR



Allow for the rug or runner to be positioned by a minimum of 10cms off all perimeter walls or fixtures. A narrow runner or shaped rug layout may be better suited to a narrower visible border on the face of the carpet. Remember to check the clearances on doors that open over the shaped rug layout or runner.



ROLS

TOTAL EDGE

Carla - Houndstooth (Alpine) with
Total Edge Fiesta 02

- Border composition: 68% Polyester / 32% Cotton
- Visible width ± (cm): 1



Rustic Blind ±1 cm



Rustic Narrow ±3 cm

- Border composition: 100% Outdoor Polyester
- Visible width ± (cm): 1 / 3

Colours:



ROLS

RUSTIC BORDER



Cotton Lis Blind ±1 cm



Cotton Lis Narrow ±3 cm



Cotton Lis Medium ±5'5 cm



Cotton Lis Large ±10 cm

Colours:

15 - Crudo

02 - Crudo

04 - Cuerda

05 - Lino

08 - Kaki

12 - Taupe

10 - Marrón

07 - Rosa

11 - Burdeos

09 - Iris

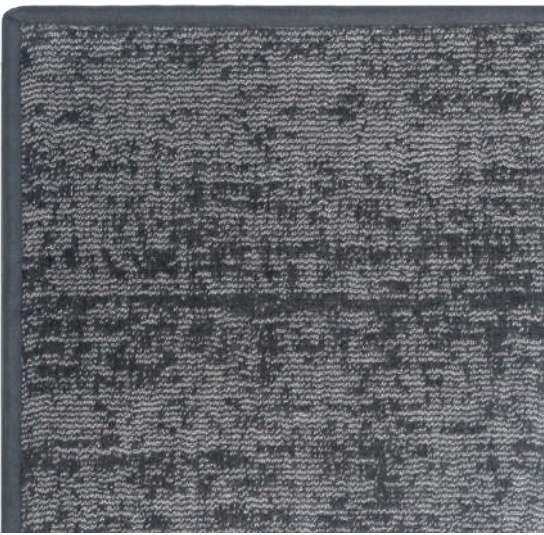
03 - Marino

06 - Gris

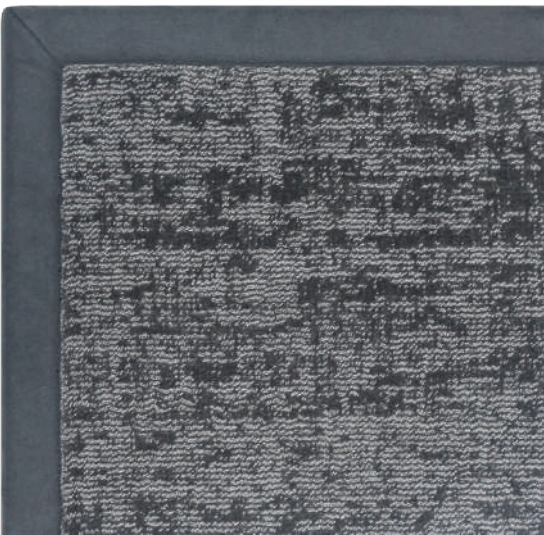
14 - Gris

19-3908 Iron

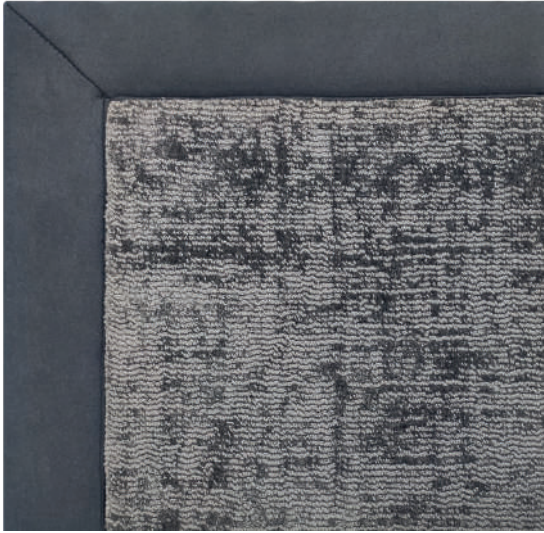
01 - Negro



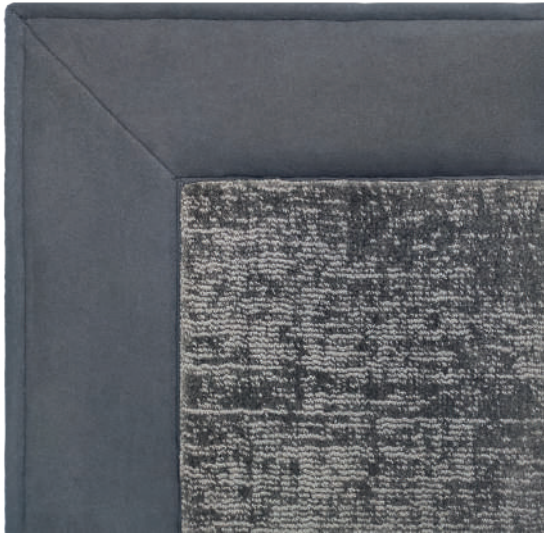
Panamá Blind ±1 cm



Panamá Narrow ±3 cm



Panamá Medium ±5'5 cm



Panamá Large ±10 cm

Colours:

Arena

Vainilla

Camel

Piedra

Marrón

Marrón Oscuro

Plata

Musgo

Gris

Antracita

Negro

Rojo

Magenta

Verde

Lila

Azul

Marino

- Border composition: 100% Microfiber
- Visible width ± (cm): 1 / 3 / 5,5 / 10



Martina - Columbite with Whipped edge

WHIPPED EDGE

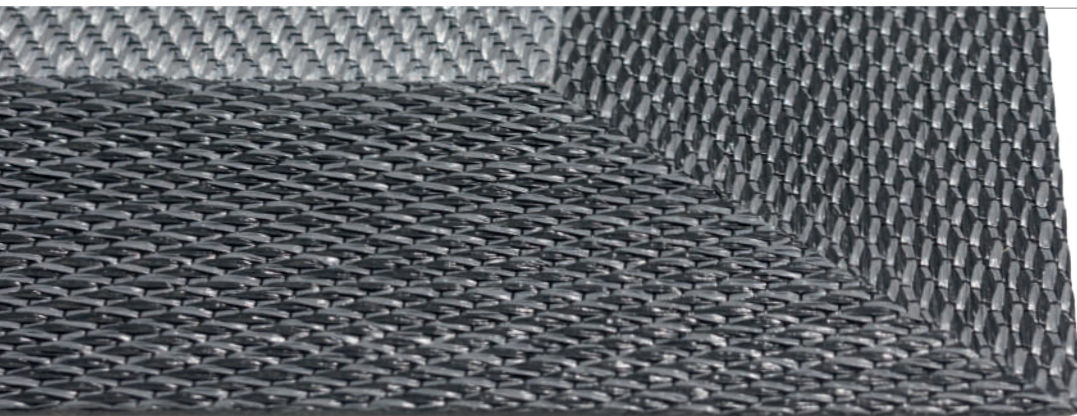
- **Description:** Yarn colour matched to carpet pile as well as the material
- **Visible width \pm (cm):** 1



Sensación - Gris oscuro 98 with Dobilux finishing

DOBILUX

- **Description:** The edges of the carpet are overturned creating rounded edges. Recommended for high pile qualities
- **Additional information:** Back band and Black Underlay are included in this finishing (see next page for detail)



Koper Basics (11) heat-sealed with Koper Basics (14)

HEAT-SEALED

- **Description:** Heat-sealing different colours specially recommended for vinyl flooring
- **Visible width \pm (cm):** 5-25

BACK BAND*

100% Cotton

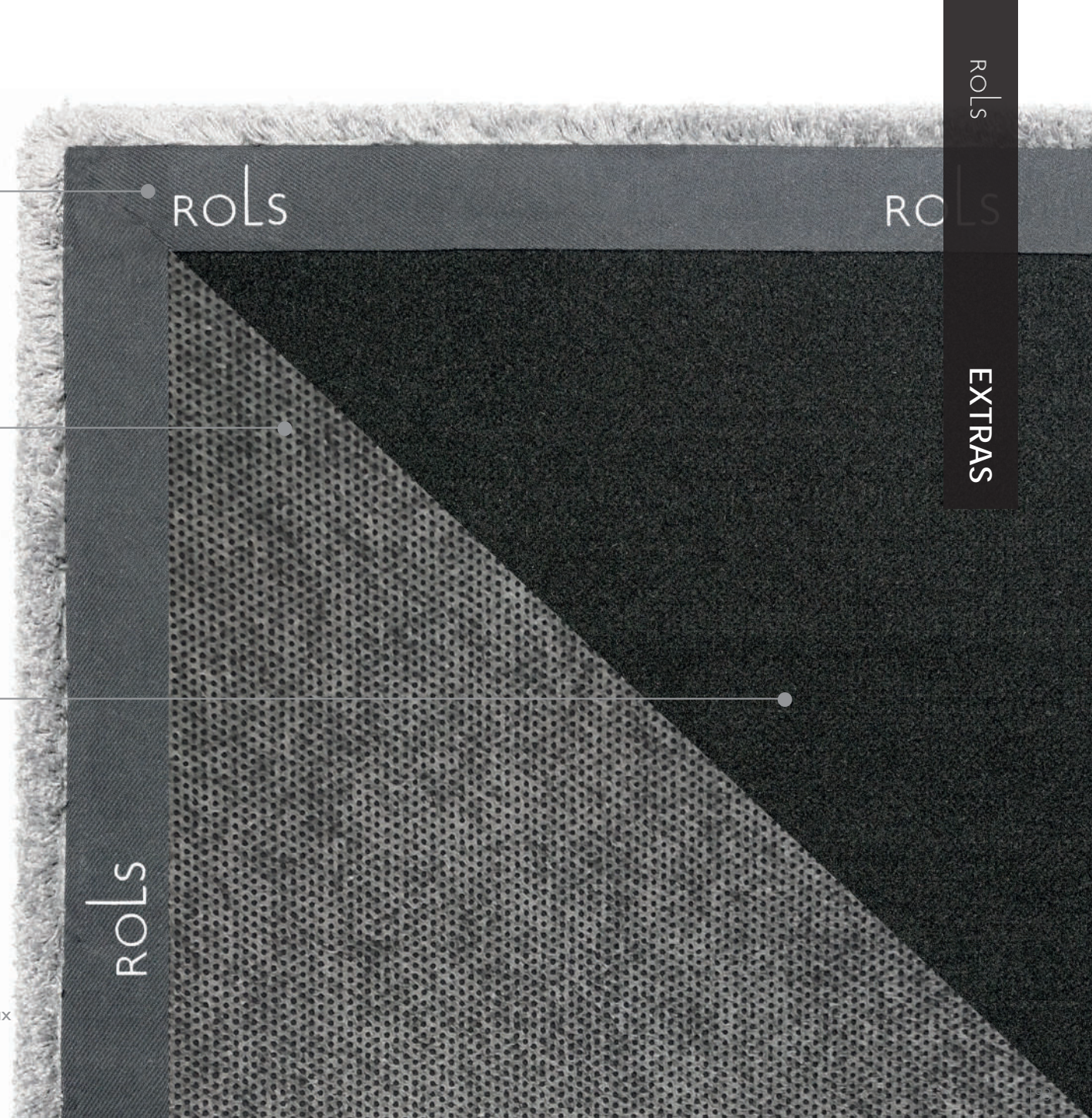
ANTI-SLIP UNDERLAY

100% Polyester

BLACK UNDERLAY*

100% Polyester

*Included in the price of Dobilux



SUPPORTING YOUR PURCHASE



TOUCH AND SEE BEFORE YOU BUY

Pictures are great and whilst we do our best to accurately reproduce colours in our brochures and on our website, there is no substitute to having a sample of the product you want to buy. Carpet is tactile and receiving a sample is a key element to your decision. You will be able touch the quality and see the exceptional surface finish we achieve by using high quality raw materials, but of equal importance, you will be able to see whether the colour of the carpet tones with the other elements of your interior scheme and how different light sources can alter the perception of a colour. We are always delighted to send samples (subject to a maximum of 3 individual 20 x 20 cm samples per customer enquiry) and these can be requested by email to info@moquetasrols.com; for larger sample orders, please contact your territory manager to discuss your requirements (please note a fee may apply).



SUITABILITY

In all instances, our stock carpets are suitable for installation throughout the home, although we don't recommend their use in areas where they could be exposed to regular contact with water (principally bathrooms and kitchens). Suitability guidance is given and specific key performance test results are shown for each product. Many of our carpets also have applications in contract locations. Please contact your territory manager for advice on contract specifications.



A GREAT CARPET NEEDS A GREAT INSTALLER

You are considering the purchase of a beautiful high-quality carpet, but don't forget it needs a skilled installer to ensure its beauty is lasting. The best carpet installers are highly skilled, have great knowledge, will give excellent advice and take pride in their work. Always ensure your installer works to the national code of practice for carpet installation and selects the best materials and method of carpet laying for the individual project. We believe a site visit from your installer is an essential part of the process and that they should have seen samples of the materials you intend to install.

We produce a comprehensive set of installation guidelines by product that can be downloaded from our website. In a number of key markets, we have both trade installation partners (business to business) and approved retail dealers (business to consumer) who will be happy to assist with your installation requirements. Please contact your territory manager for information on our installation partners.



TLC

Congratulations, you have your fabulous carpet and it has been beautifully installed. Now it will need your care and attention to ensure it continues to look great for many years. Our Carpet Care and Maintenance booklet contains useful tips on vacuum types suited to different carpet types, preventative, regular and occasional maintenance solutions and procedures and important guidance for spot cleaning. The full document can be downloaded from our website, with hard copies available on request.



WHERE TO BUY

Our carpets are niche high end products, distributed by a carefully selected network of long-standing partners throughout the key markets in Europe, The Middle East, North America and Oceania. Our partners are some of the most knowledgeable industry professionals and are well placed to offer comprehensive advice on your requirements. For details of our local partner or territory manager for your country, please contact our sales office (info@moquetasrols.com)



TERMS & CONDITIONS OF BUSINESS

All business is conducted in accordance with the company's conditions of sale and placement of an order implies acceptance of our currently published terms. Please ensure that end users are advised of the company's conditions of sale prior to purchase. The full document, setting out our terms and conditions of business, is available to download from our website.



ROLS

Pol. Ind. Faima,
C/ Calp, Nave 71-A
Apdo. Correos 102
03330 Crevillente
(Alicante) SPAIN

T. +34 965 400 979
F. +34 965 405 652

info@moquetasrols.com
www.moquetasrols.com

ISO 9001

BUREAU VERITAS
Certification



Follow us on:



ROLS